



A Guide to Output Enhancements 2

©2007 Quark Inc. as to the arrangement and content of this material. All rights reserved.

©1986–2007 Quark Inc. and its licensors as to the technology. All rights reserved.

Protected by one or more of U.S. Patent Nos. 5,541,991; 5,680,619; 5,907,704; 6,005,560; 6,052,514; 6,081,262; 6,633,666 B2; 6,947,959 B1; 6,940,518 B2; 7,116,843; and other patents pending.

Quark Products and materials are subject to the copyright and other intellectual property protection of the United States and foreign countries. Unauthorized use or reproduction without Quark's written consent is prohibited.

QUARK IS NOT THE MANUFACTURER OF THIRD PARTY SOFTWARE OR OTHER THIRD PARTY HARDWARE (HEREINAFTER "THIRD PARTY PRODUCTS") AND SUCH THIRD PARTY PRODUCTS HAVE NOT BEEN CREATED, REVIEWED, OR TESTED BY QUARK, THE QUARK AFFILIATED COMPANIES OR THEIR LICENSORS. (QUARK AFFILIATED COMPANIES SHALL MEAN ANY PERSON, BRANCH, OR ENTITY CONTROLLING, CONTROLLED BY OR UNDER COMMON CONTROL WITH QUARK OR ITS PARENT OR A MAJORITY OF THE QUARK SHAREHOLDERS, WHETHER NOW EXISTING OR FORMED IN THE FUTURE, TOGETHER WITH ANY PERSON, BRANCH, OR ENTITY WHICH MAY ACQUIRE SUCH STATUS IN THE FUTURE.)

QUARK, THE QUARK AFFILIATED COMPANIES AND/OR THEIR LICENSORS MAKE NO WARRANTIES, EITHER EXPRESS OR IMPLIED, REGARDING THE QUARK PRODUCTS/SERVICES AND/OR THIRD PARTY PRODUCTS/SERVICES, THEIR MERCHANTABILITY, OR THEIR FITNESS FOR A PARTICULAR PURPOSE. QUARK, THE QUARK AFFILIATED COMPANIES AND THEIR LICENSORS DISCLAIM ALL WARRANTIES RELATING TO THE QUARK PRODUCTS/SERVICES AND ANY THIRD PARTY PRODUCTS/SERVICES. ALL OTHER WARRANTIES AND CONDITIONS, WHETHER EXPRESS, IMPLIED OR COLLATERAL, AND WHETHER OR NOT, MADE BY DISTRIBUTORS, RETAILERS, XTENSIONS DEVELOPERS OR OTHER THIRD PARTIES ARE DISCLAIMED BY QUARK, THE QUARK AFFILIATED COMPANIES AND THEIR LICENSORS, INCLUDING WITHOUT LIMITATION, ANY WARRANTY OF NON-INFRINGEMENT, COMPATIBILITY, OR THAT THE SOFTWARE IS ERROR-FREE OR THAT ERRORS CAN OR WILL BE CORRECTED. THIRD PARTIES MAY PROVIDE LIMITED WARRANTIES AS TO THEIR OWN PRODUCTS AND/OR SERVICES, AND USERS MUST LOOK TO SAID THIRD PARTIES FOR SUCH WARRANTIES, IF ANY. SOME JURISDICTIONS, STATES OR PROVINCES DO NOT ALLOW LIMITATIONS ON IMPLIED WARRANTIES, SO THE ABOVE LIMITATION MAY NOT APPLY TO PARTICULAR USERS.

IN NO EVENT SHALL QUARK, THE QUARK AFFILIATED COMPANIES, AND/OR THEIR LICENSORS BE LIABLE FOR ANY SPECIAL, INDIRECT, INCIDENTAL, CONSEQUENTIAL OR PUNITIVE DAMAGES, INCLUDING, BUT NOT LIMITED TO, ANY LOST PROFITS, LOST TIME, LOST SAVINGS, LOST DATA, LOST FEES, OR EXPENSES OF ANY KIND ARISING FROM INSTALLATION OR USE OF THE QUARK PRODUCTS/SERVICES, IN ANY MANNER, HOWEVER CAUSED AND ON ANY THEORY OF LIABILITY. IF, NOTWITHSTANDING THE FOREGOING, QUARK, THE QUARK AFFILIATED COMPANIES AND/OR THEIR LICENSORS ARE FOUND TO HAVE LIABILITY RELATING TO THE QUARK PRODUCTS/SERVICES OR THIRD PARTY PRODUCTS/SERVICES, SUCH LIABILITY SHALL BE LIMITED TO THE AMOUNT PAID BY THE USER TO QUARK FOR THE SOFTWARE/SERVICES AT ISSUE (EXCLUDING THIRD PARTY PRODUCTS/SERVICES), IF ANY, OR THE LOWEST AMOUNT

UNDER APPLICABLE LAW, WHICHEVER IS LESS. THESE LIMITATIONS WILL APPLY EVEN IF QUARK, THE QUARK AFFILIATED COMPANIES, THEIR LICENSORS AND/OR THEIR AGENTS HAVE BEEN ADVISED OF SUCH POSSIBLE DAMAGES. SOME JURISDICTIONS, STATES OR PROVINCES DO NOT ALLOW THE EXCLUSION OR LIMITATION OF INCIDENTAL OR CONSEQUENTIAL DAMAGES, SO THIS LIMITATION OR EXCLUSION MAY NOT APPLY. ALL OTHER LIMITATIONS PROVIDED UNDER APPLICABLE LAW, INCLUDING STATUTES OF LIMITATION, SHALL CONTINUE TO APPLY.

IN THE EVENT ANY OF THESE PROVISIONS ARE OR BECOME UNENFORCEABLE UNDER APPLICABLE LAW, SUCH PROVISION SHALL BE MODIFIED OR LIMITED IN ITS EFFECT TO THE EXTENT NECESSARY TO CAUSE IT TO BE ENFORCEABLE.

USE OF THE QUARK PRODUCTS IS SUBJECT TO THE TERMS OF THE END USER LICENSE AGREEMENT OR OTHER APPLICABLE AGREEMENTS FOR SUCH PRODUCT/SERVICE. IN THE EVENT OF A CONFLICT BETWEEN SUCH AGREEMENTS AND THESE PROVISIONS THE RELEVANT AGREEMENTS SHALL CONTROL.

Quark, QuarkXPress, QuarkCopyDesk and XTensions are trademarks of Quark Inc. and all applicable affiliated companies, Reg. U.S. Pat. & Tm. Off. and in many other countries. The Quark logo is a trademark of Quark Inc. and all applicable affiliated companies.

PostScript is a registered trademark of Adobe Systems Incorporated in the United States and/or other countries.

Mac OS is a trademark of Apple Inc. registered in the U.S. and other countries.

Windows is a registered trademark of Microsoft Corporation in the United States and/or other countries.

All other marks are the properties of their respective owners.

Introduction

About this guide	vii
What we're assuming about you	vii
Conventions in this book	vii

1 Getting started with Output Enhancements XTensions software

Understanding Placeholders	1
Using the Output Enhancements XTensions user interface	2
Output Profiles Dialog Box	2
Output Profile Groups Dialog Box	3
Output Profiles Jobs Dialog Box	4

2 Output Profiles

Creating an Output Profile for a Printer	5
Specifying Device Options	7
Specifying Pages Options	9
Specifying Color Options	11
Specifying Pictures Options	12
Specifying Headers Options	13
Specifying Header Placement Options	15
Specifying Marks Options	16
Specifying Article Options	16
Specifying Notes Options	17
Creating an Output Profile for a PDF File	18
Specifying Setup Options	19
Specifying Pages Options	20
Specifying Meta Data Options	21
Specifying Hyperlinks Options	22
Specifying Compression Options	23

Specifying Colors Options	24
Specifying Pictures Options	25
Specifying Headers Options	25
Specifying Header Placement Options	27
Specifying Marks Options	28
Specifying Article Options	28
Specifying Notes Options	29
Creating an Output Profile for an Article XML file	30
Specifying Setup Options	31
Specifying Tagging Rules Options	32
Specifying Char Mapping Options	34
Specifying Options	35
Editing, duplicating, deleting, importing, and exporting an Output Profile	36
Editing an Output Profile	36
Duplicating an Output Profile	36
Deleting an Output Profile	36
Exporting an Output Profile	36
Importing an Output Profile	37
Executing an Output Profile	38
3 Output Profile Groups	
Creating an Output Profile Group	39
Editing, duplicating, deleting, exporting and importing an Output Profile Group	40
Editing an Output Profile Group	40
Duplicating an Output Profile Group	41
Deleting an Output Profile Group	41
Exporting an Output Profile Group	41
Importing an Output Profile Group	42
Executing an Output Profile Group	43

4	Placeholders	
	Placeholders Syntax	44
	Basic Syntax	44
	Getting substring of a placeholder value	44
	Formatting the output	46
	List of Placeholders	47
	Glossary	

Introduction

Before you begin, take time to review this chapter so that you understand how the guide is structured and how you can get the most out of it.

ABOUT THIS GUIDE

You do not need to read *A Guide to Output Enhancements 2* from cover to cover. Instead, use this guide to quickly look up information, find out what you need to know, and get on with your work.

WHAT WE'RE ASSUMING ABOUT YOU

In writing this guide, we assume that you are familiar with your computer and know how to:


- Launch an application
- Open, save, and close files
- Use menus, dialog boxes, and palettes
- Work within a networked computing environment
- Use the mouse, keyboard commands, and modifier keys

Consult the documentation provided with your computer or other resources if you need more information in any of these areas.

CONVENTIONS IN THIS BOOK

Formatting conventions in this guide highlight information to help you quickly find what you need.

- **Bold type style:** The names of all dialog boxes, fields, and other controls are set in bold type. For example: “Click **OK**.”
- **References:** In descriptions of features, parenthetical references guide you in accessing those features. For example: “The **Modify** dialog box (**Item** menu) lets you format items.”
- **Arrows:** You will often see arrows (→), which map out the menu path to a feature. For example: “Choose **Item** → **Modify** → **Text** to access the **Columns** field.”

- **Icons:** Although many tools and buttons are referenced by name, which you can see by displaying ToolTips, in some cases icons are shown for easy identification. For example, “Click the  button on the **Measurements** palette to center text.”
- **Cross-platform issues:** QuarkCopyDesk® is quite consistent across operating systems. However, some labels, buttons, key combinations, and other aspects of QuarkCopyDesk must differ between Mac OS® and Windows® because of user interface conventions or other factors. In such cases, both the Mac OS and Windows versions are presented, separated by a slash, with the Mac OS version is presented first. For example, if the Mac OS version of a button is labeled **Select**, and the Windows version is labeled **Browse**, you are directed to “Click **Select/Browse**.” More complex cross-platform differences are mentioned in notes or parenthetical statements.

Chapter 1: Getting started with Output Enhancements XTensions software

Output Enhancements XTensions software enables you to output to single or multiple printers, PDF formats, or Article XML in a single operation.

Use this XTensions® software to create Output Profiles and Output Profile Groups (a set of Output Profiles). With Output Profiles and Output Profile Groups, you can generate output in a variety of formats from the same project.

This chapter introduces you to the fundamentals of Output Enhancements XTensions software.

UNDERSTANDING PLACEHOLDERS

Creating an Output Profile requires an understanding of placeholders. Placeholders are variables that are replaced dynamically with their proper value at output. There are three groups of placeholders: system, document (general document information), and action.

Relevant placeholders are grouped under respective drop-down menus. You can insert a placeholder syntax at the text insertion position when you choose an option from the drop-down menu. You can also enter a placeholder in the relevant field. A placeholder returns a proper value only when an output is performed.

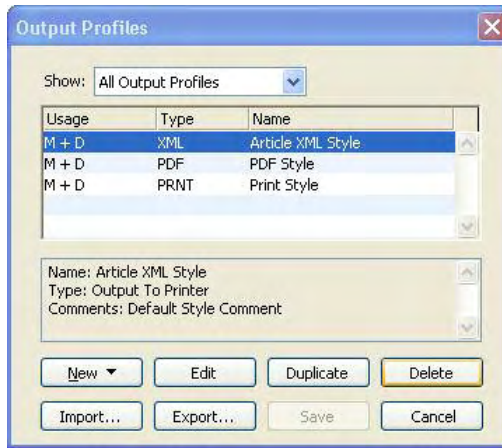
For more information on placeholders, see Chapter 4, “Placeholders.”

USING THE OUTPUT ENHANCEMENTS XTENSIONS USER INTERFACE

The Output Enhancements XTensions interface includes **Output Profiles**, **Output Profile Groups**, and **Output Profiles Jobs** dialog boxes. Use these dialog boxes to perform tasks specific to each of these components. You will learn more about these dialog boxes in the following chapters.

OUTPUT PROFILES DIALOG BOX

You can use Output Profiles to manage all device-specific output settings. Use the **Output Profiles** dialog box to create, edit, duplicate, delete, import, export, and save an Output Profile. Choose **Edit** → **Output Profiles** to display the **Edit Output to <output profile type> Profiles** dialog box.



The **Output Profiles** dialog box

The **Output Profiles** dialog box displays a list of Output Profiles along with the **Type** and **Name** of the Output Profile. The **Usage** column indicates if the Output Profile is included in **Output Profile Jobs** menu (**File** → **Output Profile Jobs**) or in the **Output Profiles Jobs** dialog box (**File** → **Output Profile Jobs** → **Output Profile Jobs**). The **Output Profile** dialog box includes the following elements:

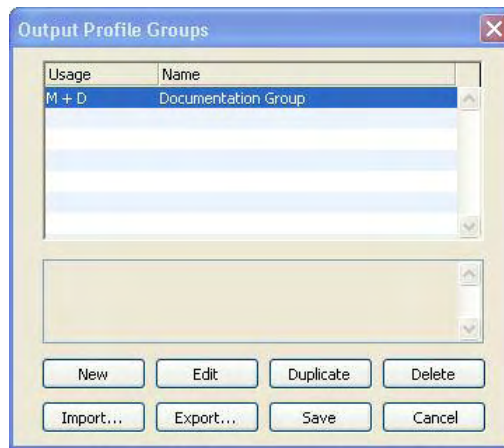
- **Show** drop-down menu: Choose to display **Print**, **PDF**, **XML**, or **All Output Profiles**.
- **New** drop-down menu: Choose a type of Output Profile to create.
- **Edit** button: Click to edit an Output Profile.
- **Duplicate** button: Click to duplicate an Output Profile.
- **Delete** button: Click to delete an Output Profile.
- **Import** button: Click to import an Output Profile.

- **Export** button: Click to export an Output Profile.
- **Save** button: Click to save changes and close the dialog box.
- **Cancel** button: Click to close the **Output Profiles** dialog box.

Select an Output Profile in the list to display information about the Output Profile.

OUTPUT PROFILE GROUPS DIALOG BOX

An Output Profile Group is a group of multiple output profiles. Use the **Output Profile Groups** dialog box to create, edit, duplicate, delete, import, export, and save an Output Profile Group. Choose **Edit** → **Output Profile Groups** to display the **Output Profile Groups** dialog box.



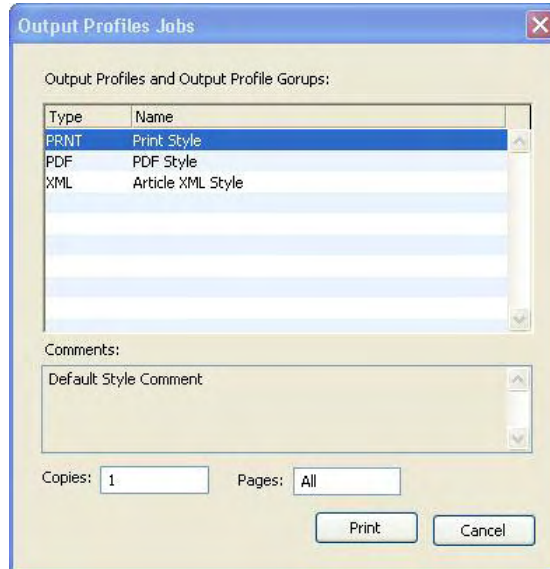
The **Output Profile Groups** dialog box

The **Output Profile Groups** dialog box displays a list of Output Profile Groups. The **Usage** column indicates if the Output Profile Group is included in **Output Profile Jobs** menu (**File** → **Output Profile Jobs**) or in the **Output Profiles Jobs** dialog box (**File** → **Output Profile Jobs** → **Output Profile Jobs**). The **Output Profile Groups** dialog box includes the following elements:

- **New** button: Click to create an Output Profile Group.
- **Edit** button: Click to edit an Output Profile Group.
- **Duplicate** button: Click to duplicate an Output Profile Group.
- **Delete** button: Click to delete an Output Profile Group.
- **Import** button: Click to import an Output Profile Group.
- **Export** button: Click to export an Output Profile Group.
- **Save** button: Click to save changes and close the dialog box.
- **Cancel** button: Click to close the **Output Profile Groups** dialog box.

OUTPUT PROFILES JOBS DIALOG BOX

Use the **Output Profiles Jobs** dialog box to execute an Output Profile or all profiles in an Output Profile Group. Choose **File → Output Profile Jobs → Output Profile Jobs** to display the **Output Profiles Jobs** dialog box.



The **Output Profiles Jobs** dialog box

The **Output Profiles Jobs** dialog box displays a list of Output Profiles and Output Profile Groups along with the **Type** and **Name** of the Output Profile or Output Profile Group. The **Output Profiles Jobs** dialog box includes the following elements:

- **Copies** field: Enter the number of copies to output.
- **Pages** field: Enter the pages number(s) to output.
- **Print** button: Click to print or execute the selected Output Profile or Output Profile Group.
- **Cancel** button: Click to close the **Output Profiles Jobs** dialog box.

Chapter 2: Output Profiles

Output Profiles are an enhanced version of output styles that you can use to output a QuarkCopyDesk article to a printer, a PDF file, or an Article XML file. Output Profiles offer single click execution of profiles, support for header boxes and placeholders, advanced picture handling, and the ability to group profiles.

You can configure each of these options and save them in an individual Output Profile that contains saved settings for a specific output purpose.

You can create, edit, delete, duplicate, import, export, and save as many Output Profiles as required. While creating an Output Profile, you must specify the kind of output you plan to create: printer, PDF file, or Article XML file.

CREATING AN OUTPUT PROFILE FOR A PRINTER

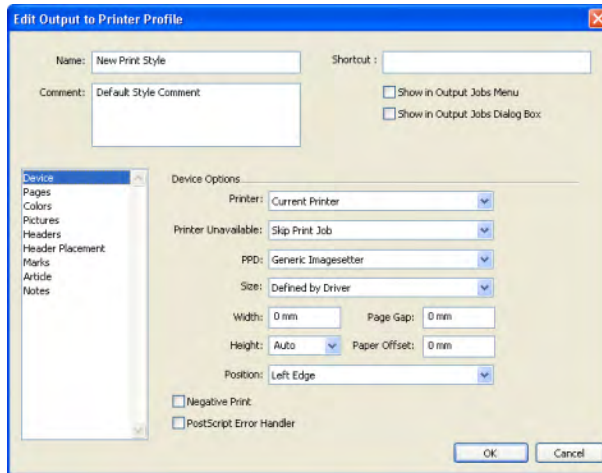
Creating an Output Profile for a printer saves a printing setup using the **Device**, **Pages**, **Colors**, **Pictures**, **Headers**, **Header Placement**, **Marks**, **Article**, and **Notes** options. To create an Output Profile for a printer:

- 1 Choose **Edit** → **Output Profiles** to display the **Output Profiles** dialog box.



The **Output Profiles** dialog box

- Click **New** and choose **Output to Printer** from the drop-down menu to display the **Edit Output to Printer Profile** dialog box.



The **Edit Output to Printer Profile** dialog box

- Enter a name for the Output Profile in the **Name** field.
- Enter comments, if any, in the **Comments** field.
- Enter a keyboard shortcut in the **Keyboard Shortcut** field.
- Check **Show in Output Profile Jobs Menu** to display an Output Profile in the **File → Output Profile Jobs** submenu. Using this, you can directly access an Output Profile from the menu. An **M** displays in the **Usage** column of the **Output Profiles** dialog box when you select this option.
- Check **Show in Output Profiles Jobs Dialog** to display an Output Profile in the **Output Profiles Jobs** dialog box (**File → Output Profile Jobs → Output Profile Jobs**). A **D** displays in the **Usage** column of the **Output Profiles** dialog box when you select this option.
- Select the following options to enter relevant information:
 - **Device**
 - **Pages**
 - **Colors**
 - **Pictures**
 - **Headers**
 - **Header Placement**
 - **Marks**
 - **Article**
 - **Notes**

For more information on specifying settings in these options, see the relevant section in this guide. For example, to specify a printer in the **Device** option, see “Specifying Device Options” later in this chapter.

- 9 Click **OK** in the **Edit Output to Printer Profile** dialog box, then click **Save** in the **Output Profiles** dialog box to save the specified information.
- 10 Click **Cancel** to close the dialog box without saving any information.

SPECIFYING DEVICE OPTIONS

To specify **Device** options, select **Device** and enter relevant information:

- To save a printer with the Output Profile, choose a printer from the **Printer** drop-down menu. This drop-down menu displays all the printers installed on your computer either through a port or across a network.



Current Printer in the **Printer** drop-down menu refers to the default printer installed on your computer.

- If the selected printer is not available at the time of processing, you can choose an option from the **Printer Unavailable** drop-down menu. Choose **Skip Print Job** to skip the printing of the profile, **Ask User** to select a printer from a list of available printers that displays before the print job processes, or **Use Current Printer** to use the default printer installed on your computer.
- To specify an appropriate PostScript® Printer Description (PPD) file for the PostScript printer you intend to use, choose a **PPD** from the **Printer** drop-down menu. You can customize the list of PPDs available in the **Printer** drop-down menu using the **PPD Manager** dialog box (**Utilities** menu). See *A Guide to QuarkCopyDesk* for more information.

When you specify a PPD, default information supplied by the PPD will fill the **Paper Size**, **Width**, and **Height** fields automatically. If you choose a PPD for an imagesetter, the **Page Gap** and **Paper Offset** fields are also available. If you do not have a specific PPD, choose a similar built-in, generic PPD.



PPDs are created by printer manufacturers and are usually supplied with Post-Script printers. Contact the appropriate printer manufacturer for more information.

- To specify the media size used by your printer, choose a size from the **Paper Size** drop-down menu.

- To specify the width and height of custom media supported by your printer, choose **Custom** from the **Size** drop-down menu and enter values in the **Width** and **Height** fields. **Custom** is only available if it is supported by your PPD.

Enter the correct value when specifying paper width for an imagesetter. The sum of values entered in the **Paper Offset** and **Paper Width** fields must not be greater than the media width defined for the imagesetter.

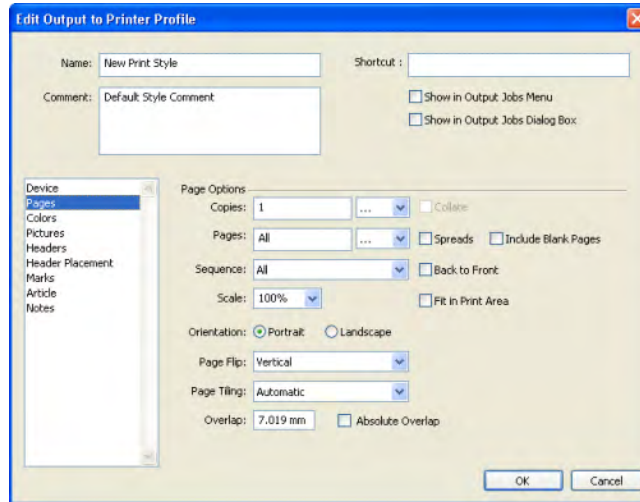
Values entered in the **Height** field must not be greater than the maximum media height the imagesetter can support. When outputting to a continuous-feed or nondrum imagesetter, use the **Auto** setting in the **Height** field.

- To position your document on the selected output media, choose an option from the **Position** drop-down menu. The default page positioning option is **Left Edge**, which positions the top left of the document page on the top left of the selected media. **Center** centers the page horizontally and vertically in the imageable area of the selected output media. The **Center Horizontal** option centers the page left-to-right in the imageable area. The **Center Vertical** option centers the page top-to-bottom in the imageable area.
- To print negative page images, check **Negative Print**. When **Negative Print** is checked, flipping a page horizontally or vertically will produce right-reading, emulsion-down film output, which is a common standard for commercial printers in the United States.
- To receive printed PostScript error reporting from QuarkCopyDesk, check **PostScript Error Handler**. The PostScript Error Handler utility provides, in addition to PostScript error handling, information about where on a page the PostScript error occurs. If a PostScript error occurs during the printing of a QuarkCopyDesk item, the utility will print the page containing the QuarkCopyDesk items handled successfully up to the point of the error. The utility will then print an error report containing: (1) The bounding box of the item where the error occurred. This box is identified by a black border and a 50% black background. (2) A message at the top left of the page specifying the type of item causing the error. Lay the error report on top of the partially printed page to isolate the offending item. The bounding box on the error report indicates the location of the object causing the error.

The PostScript Error Handler is designed only for PostScript printing. The PostScript Error Handler will append its report to any other PostScript error reporting utilities you are using.

SPECIFYING PAGES OPTIONS

The **Pages** options specify page-related settings including copies, scale, and orientation. To set up the **Pages** options, select **Pages** and enter relevant information:



The **Pages** options

- To specify the number of copies to print, enter a value in the **Copies** field (the default is 1). You can also use an **Action** placeholder in the **Copies** field (see Chapter 4, “Placeholders” for more information).
- To specify which article pages to print, enter a value in the **Pages** field (the default is **All**). You can specify ranges of pages, nonsequential pages, or a combination of ranges and nonsequential pages for printing. You can also use an **Action** placeholder in the **Pages** field (see Chapter 4, “Placeholders” for more information).

Use commas and hyphens to define a sequential or nonsequential range of pages. For example, if you have a 20-page article and you want to print pages 3 through 9, 12 through 15, and page 19, enter 3–9, 12–15, 19 in the **Pages** field.



You can also change these separators in the Preferences dialog box (**QuarkCopyDesk** → **Preferences/Edit** → **Preferences** → **Input Settings**).

- To specify the page sequence, choose **All**, **Odd**, or **Even** from the **Sequence** drop-down menu. **All** is the default setting. When you choose **Odd**, only odd-numbered pages are printed. When you choose **Even**, only even-numbered pages are printed. The **Sequence** field is not available when the **Spreads** check box is selected.

- To make a document print smaller or larger, enter a percentage in the **Scale** field. The default is 100%.
- Select **Portrait** or **Landscape** orientation to specify whether to print in portrait or landscape mode. **Portrait** orientation is the default.
- Choose an option from the **Page Flip** drop-down menu. The **Page Flip** drop-down menu has four options: **None**; **Horizontal** — to reverse the printing of page images from left to right; **Vertical** — to print page images upside down; and **Horizontal & Vertical** — to print page images from left to right and upside down. When you choose **Horizontal & Vertical**, the image is right-reading, but the page feeds in the opposite direction of the **None** setting.
- To print a large document in sections (tiles), choose an option from the **Tiling** drop-down menu. When you specify tiling, QuarkCopyDesk prints portions of each article page in two or more overlapping tiles that create the complete page when laid side-by-side. When you choose **Manual**, you control the way a page is tiled by positioning the ruler origin. When you choose **Automatic**, the application determines the number of tiles required to print each document page, based on the article size, the printer's media (paper) size, whether or not **Absolute Overlap** is checked, and the value you enter in the **Overlap** field (the default overlap is 3).

The value you enter in the **Overlap** field is the amount the application will extend the page to create the tile. When **Absolute Overlap** is checked, QuarkCopyDesk will use only the value in the **Overlap** field when extending the page to create the tile. If **Absolute Overlap** is unchecked, the application will use at least the amount in the **Overlap** field when creating the tile, but may use a larger amount if necessary. Do not check **Absolute Overlap** if you want your article centered on the final assembled tiles. QuarkCopyDesk prints tickmarks and location information on each tile to aid you in reassembling them.

- To print two or more copies of an article so that they output with all pages in the correct order for binding, check **Collate**. If you print three copies of an article and check **Collate**, the application prints one complete copy of the article before beginning the second copy.

When you check **Collate**, QuarkCopyDesk sends the article to the printer as though you sent more than one **Print** command, so it will take longer to print than uncollated multiple copies.

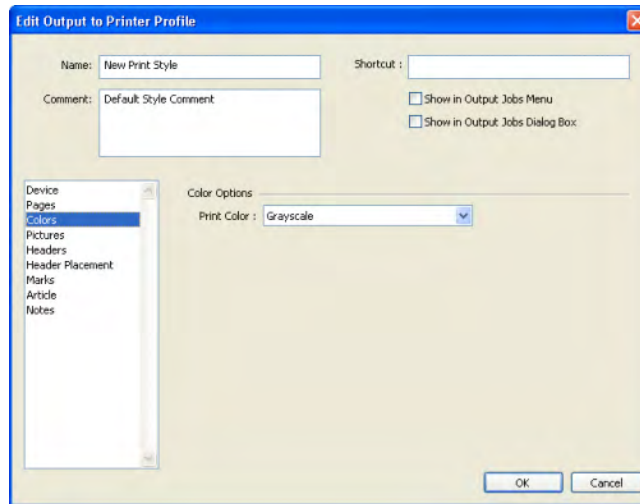
If **Collate** is unchecked, QuarkCopyDesk prints three copies of the first page, then three copies of the second page, and so on.

- To print two or more adjoining pages side-by-side on film or paper, check **Spreads**.

- To print pages that are blank, check **Include Blank Pages**.
- Check **Back to Front** to print a multipage article in reverse order. The last page in the article will print first.
- Check **Fit in Print Area** to reduce or enlarge the size of a page in a document to fit the imageable area of the selected media. The **Scale** and **Page Tiling** options are unavailable when **Fit in Print Area** is checked.

SPECIFYING COLOR OPTIONS

To specify **Color Options**, select **Colors** in the list and enter relevant information:



The **Colors** options

- From the **Print Color** drop-down menu, choose **Grayscale**, **Composite RGB**, or **Composite CMYK**.

Grayscale prints colors as shades of gray to a black-and-white printer. For example, a box with a yellow background will print as a light shade of gray.

Composite RGB prints composite RGB color to a color printer when you choose a color printer in the **Setup** tab in the **Printer Description** drop-down menu.

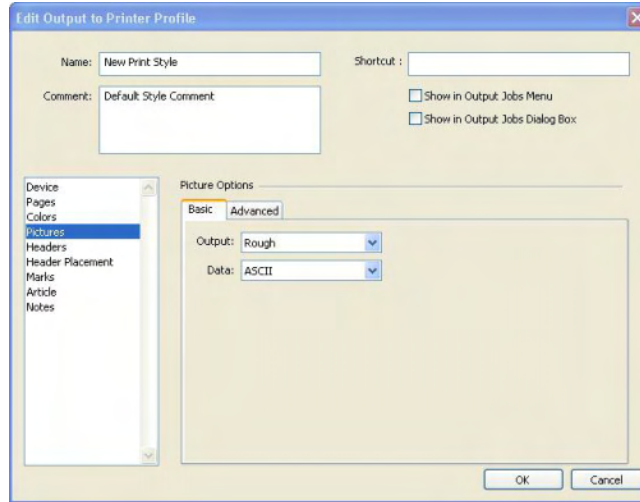
Composite CMYK prints composite CMYK color to a color printer when you choose a color printer in the **Setup** tab of the **Printer Description** drop-down menu.

If you choose a **Printer** for a CMYK device in the **Device** options, the **Print Color** drop-down menu defaults to **Composite CMYK**. If you choose a **Printer** for an RGB device in the **Device** options, the **Print Color** drop-down menu defaults to **Composite RGB**.

SPECIFYING PICTURES OPTIONS

The **Pictures** options contain **Basic** and **Advanced** settings. To specify **Pictures** options, select **Pictures** in the list and enter relevant information:

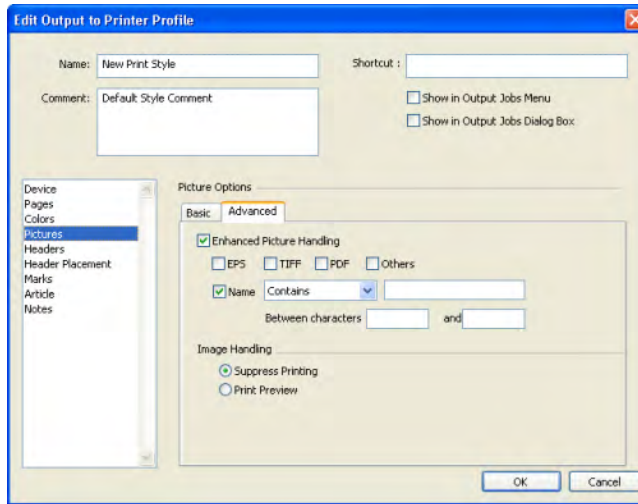
- Click the **Basic** tab to display settings for **Output** and **Data**.



The **Basic** tab (**Pictures** options)

- To specify how pictures are printed, choose **Normal**, **Low**, or **Rough** from the **Output** drop-down menu. **Normal** is the default, and provides high-resolution output of pictures using the data from the pictures' source files. The **Low** option prints pictures at screen preview resolution. The **Rough** option suppresses output of pictures and box frames, and prints a box with an "x" in it, much like an empty picture box on-screen. (If a picture box has a background of *None*, an "x" will not print in the box when choosing **Rough** from the **Output** drop-down menu).
- From the **Data** drop-down menu, choose **ASCII**, **Binary**, or **Clean 8 bit**. Though documents print more quickly in **Binary** format, the **ASCII** option is more portable because it is a standard format readable by a wider range of printers and print spoolers. The **Clean 8 bit** option combines ASCII and binary in a versatile and portable file format.

- Click the **Advanced** tab to display settings for **Enhanced Picture Handling**.

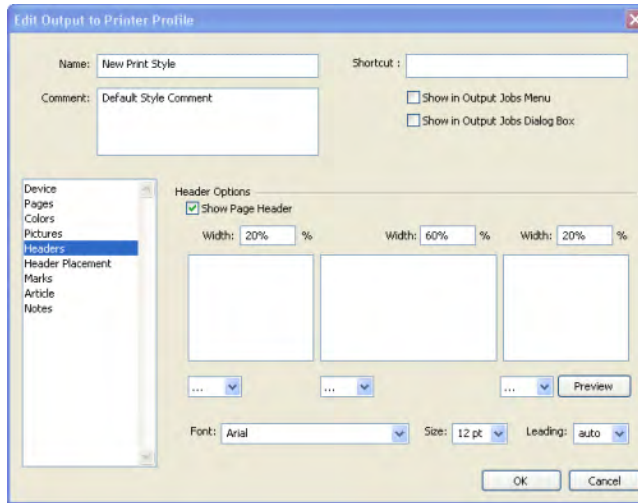


The **Advanced** tab (**Pictures** options)

- Check **Enhanced Picture Handling** to apply rule-based, selective picture printing at output.
- Check **EPS**, **TIFF**, and **PDF** to replace *only* EPS, TIFF, and PDF picture types. Check **Others** to replace any other picture format (except EPS, TIFF, or PDF).
- To search for a picture with a specific name and apply your rules to that picture, check **Name**, choose an option (**Starts with**, **Ends with**, **Contains**, **Does not contain**, **Is equal to**, or **Is not equal to**) from the **Name** drop-down menu, and then enter the name you want to search for in the box beside the **Name** drop-down menu. When you choose **Contains** or **Does not contain** from the **Name** drop-down menu, you can enter the name you want to search for and then specify the beginning and ending characters to search between in the **Between Characters** fields.
- To suppress the printing of the checked picture type(s), click **Suppress Printing**.
- To print the low-resolution preview of the checked picture type, click **Print Preview**. For example, if you check **EPS** and click **Print Preview**, all EPS pictures will print with their low-resolution preview.

SPECIFYING HEADERS OPTIONS

Select **Headers** to specify information about a header in an article. A header is placed at the top of each QuarkCopyDesk page, and can contain both fixed and variable text (through placeholders) such as page number or article name. Output Enhancements XTensions software checks for these variables and prints the relevant information.



The **Headers** options



The information specified in the **Headers** option displays on the output.

- To display a header and specify options for that header, check **Show Page Header**.
- Enter a percentage of the width for the left, middle, and right areas in the corresponding **Width (%)** fields. Enter text to display in the left, middle, and right fields.

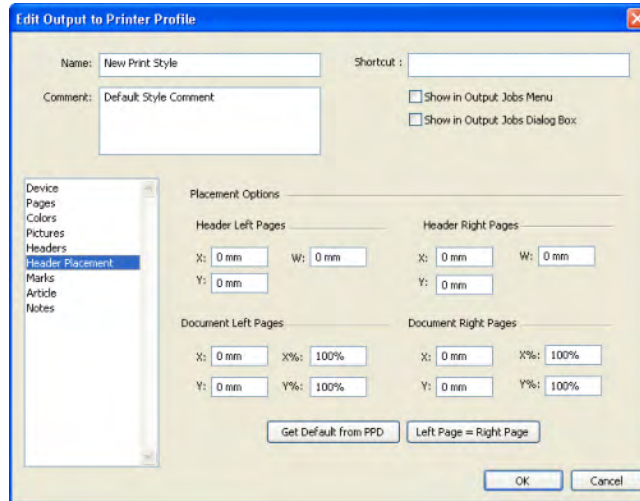


The percentages of width specified for the header refer to the page width of the document or paper on which the article is printed. This percentage can be less than 100%.

- You can also choose relevant placeholder options from the placeholder drop-down menus (< >).
- To specify the font type, font size, and leading value, choose the relevant options from the **Font**, **Size**, and **Leading** drop-down menus.
- Click **Preview** to view how the header for an open QuarkCopyDesk article will print. If a QuarkCopyDesk article is not open, #### characters display in the header fields.

SPECIFYING HEADER PLACEMENT OPTIONS

To specify **Header Placement** options, select **Header Placement**:



The **Header Placement** options

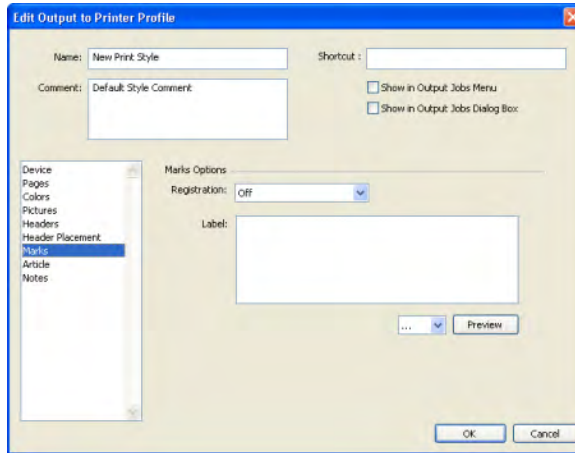
- The **Header Left Pages** and **Header Right Pages** areas enable you to configure the area where you place the header box and QuarkCopyDesk article. To place a document correctly, you must configure the origin of the document, the scaling of the document, and different settings for left and right pages.

Enter values for the x and y coordinates in the **X** and **Y** fields respectively (**Header Left Pages** and **Header Right Pages** areas) to change the origin of the header box. Use the **W** field to change the total width of the header box.

- Enter values for x and y coordinates in the **X** and **Y** fields respectively (**Document Left Pages** and **Document Right Pages** areas) to specify where the document content starts. Enter the percentage scaling in the **X%** and **Y%** fields to apply scaling to a document to ensure it fits within the printable area.
- To use the default printer settings for the printable area, click **Get Default From PPD**.
- Click **Left Page = Right Page** to apply the same page header settings to the left and right pages.

SPECIFYING MARKS OPTIONS

To specify **Marks** options, select **Marks**:

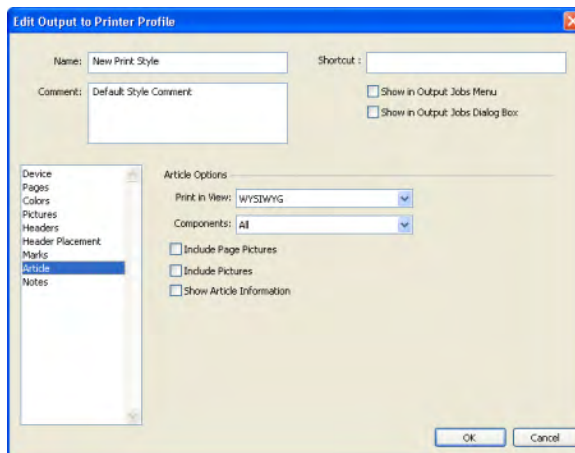


The **Marks** options

- To specify that registration marks print on every page, choose **Centered** or **Off Center** from the **Registration** drop-down menu.
- Enter a label name for a page in the **Label** field. This label name displays between the top registration marks. You can also select a placeholder from the placeholder drop-down menu (< >) as a label name.
- To display a preview of the registration marks, click **Preview**.

SPECIFYING ARTICLE OPTIONS

To specify **Article** options, select **Article**:

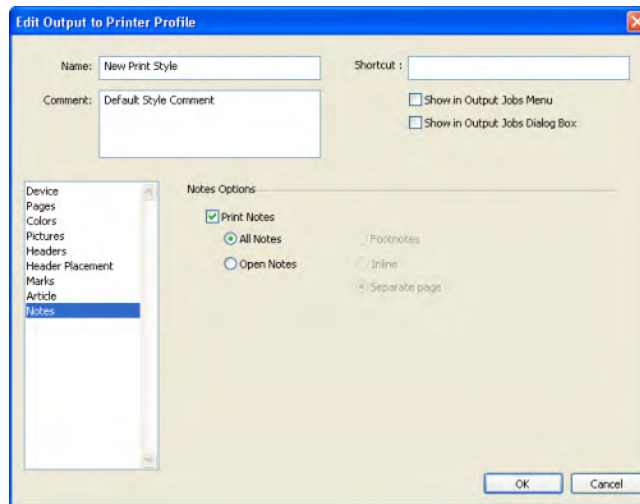


The **Article** options

- Choose a print view from the **Print in View** drop-down menu. You can choose **WYSIWYG**, **Galley**, **Full Screen**, **WYSIWYG One Column**, or **Current Article View**.
- To print only expanded components, choose **Expanded Only** from the **Components** drop-down menu. Choose **Current** to print only the current component. Print **All** components is the default.
- Check **Include Page Pictures** to print locked or uneditable components.
- To print article pictures, check **Include Pictures**.
- Check **Show Article Information** to print the date, time, document name, and page number as a footnote.

SPECIFYING NOTES OPTIONS

To specify **Notes** options, select **Notes**:



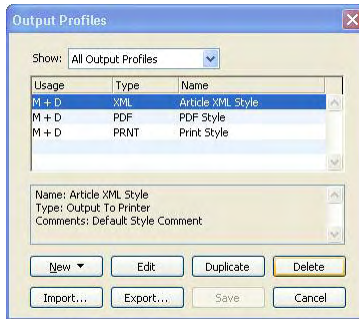
The **Notes** options

- Check **Print Notes** to print document notes. Click **All Notes** to print all open and closed notes. Click **Open Notes** to print only open notes.
- You can choose where you want notes to print in the document. Click **Footnotes** to print the notes as footnotes, **Inline** to print the notes at their location in the content, or **Separate page** to print all the notes on a separate page from the rest of the document content.

CREATING AN OUTPUT PROFILE FOR A PDF FILE

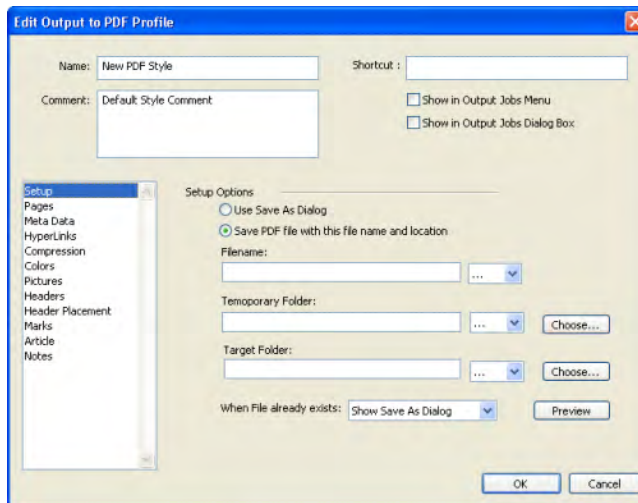
To create an Output Profile for a PDF file:

- 1 Choose **Edit** → **Output Profiles** to display the **Output Profiles** dialog box.



The **Output Profiles** dialog box

- 2 Choose **New** → **Output to PDF** to display the **Edit Output to PDF Profile** dialog box.



The **Edit Output to PDF Profile** dialog box

- 3 Enter a name for the Output Profile in the **Name** field.
- 4 Enter comments, if any, in the **Comments** field.
- 5 Enter a keyboard shortcut in the **Keyboard Shortcut** field.
- 6 Check **Show in Output Profiles Jobs Menu** to display an Output Profile in the **File** → **Output Profile Jobs** submenu. Using this, you can directly access an Output Profile from the menu. An **M** displays in the **Usage** column of the **Output Profiles** dialog box when you select this option.

- 7 Check **Show in Output Profile Jobs Dialog** to display an Output Profile in the **Output Profile Jobs** dialog box (**File** → **Output Profile Jobs** → **Output Profile Jobs**). A **D** displays in the **Usage** column of the **Output Profiles** dialog box when you select this option.
- 8 Click the following tabs to enter information:
 - **Setup**
 - **Pages**
 - **Meta Data**
 - **HyperLinks**
 - **Compression**
 - **Colors**
 - **Pictures**
 - **Headers**
 - **Header Placement**
 - **Marks**
 - **Article**
 - **Notes**

For more information on specifying settings in these options, see the relevant section in this guide. For example, to specify page settings in the **Pages** option, see the “Specifying Pages Options” section in this chapter.
- 9 Click **OK** in the **Edit Output to PDF Profile** dialog box, then click **Save** in the **Output Profiles** dialog box to save the specified information.
- 10 Click **Cancel** to close the dialog box without saving any information.

SPECIFYING SETUP OPTIONS

To specify **Setup** options, select **Setup**:

- Click **Use Save As Dialog** to display the default **Save As** dialog box when saving to PDF output.
- To save the output PDF file with a specific name and to a selected location, click **Save PDF file with this file name and location**.

In the **Filename** field, enter the name of the PDF file. Enter the temporary folder path for your PDF file in the **Temporary Folder** field. Enter the path of the folder where you want to save the final PDF file in the **Target Folder** field. Click **Choose** to navigate to and select a temporary folder or target folder path.

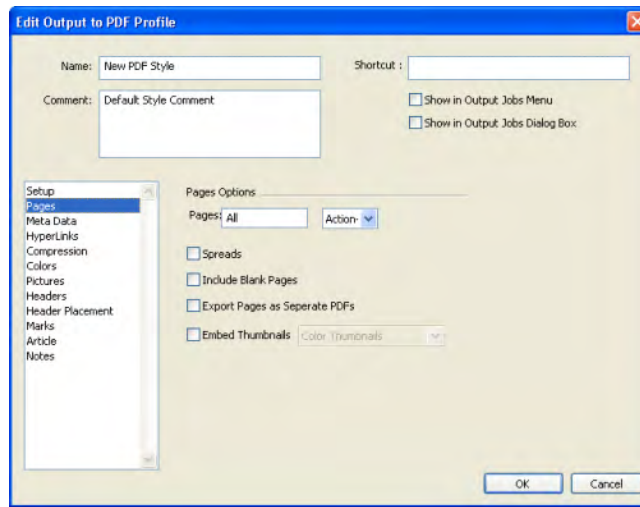
You can also choose relevant placeholders from the placeholders drop-down menus (< >) for the **Filename**, **Temporary Folder**, and **Target Folder** fields.

In the **When File already exists** drop-down menu, you can choose what to do if a PDF file with the same name already exists. Choose **Show Save As Dialog** to display the default **Save As** dialog box, **Override** to replace the existing file with the new one, or **Create Version** to create another version of the file.

Click **Preview** to display a preview of the active field. If a placeholder value is unavailable, #### characters display for that placeholder in the preview.

SPECIFYING PAGES OPTIONS

To specify **Pages** options, select **Pages**:



The **Pages** options

- To specify which pages to print, enter a value in the **Pages** field (the default is **All**). In the **Pages** field, you can specify ranges of pages, nonsequential pages, or a combination of ranges and nonsequential pages for printing.

Use commas and hyphens to define a sequential or nonsequential range of pages. For example, if you have a 20-page article and you want to print pages 3 through 9, 12 through 15, and page 19, then enter 3–9, 12–15, 19 in the **Pages** field.

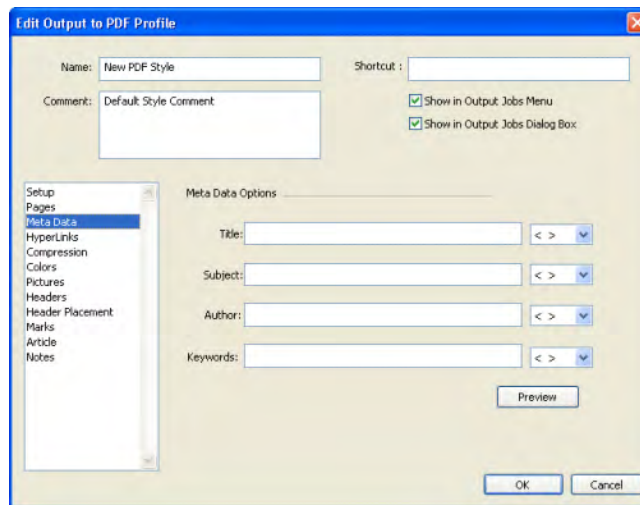


You can also change these separators in the **Preferences** dialog box (**QuarkCopyDesk** → **Preferences/Edit** → **Preferences** → **Input Settings**).

- You can also use an **Action** placeholder in the **Pages** field (see Chapter 4, “Placeholders” for more information).
- To print two or more adjoining pages side-by-side, check **Spreads**.
- To print pages that are blank, check **Include Blank Pages**.
- When you check **Export Pages as Separate PDFs**, each page or spread exports as a separate PDF file.
- Check **Embed Thumbnails** to include thumbnails in the PDF file. You can choose **Color Thumbnails** or **B&W Thumbnails** from the **Embed Thumbnails** drop-down menu.

SPECIFYING META DATA OPTIONS

To specify **Meta Data** options, select **Meta Data**:

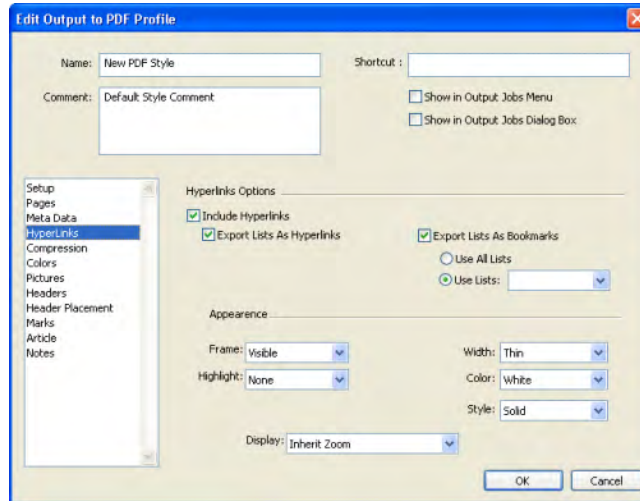


The **Meta Data** options

- Insert text in the **Title**, **Subject**, **Author**, and **Keywords** fields. You can also choose a placeholder from the placeholders drop-down menus (< >) for each of these fields. The formatted placeholder text is inserted in the field (see Chapter 4, “Placeholders” for more information).
- Click **Preview** to display a preview of the active field. If a placeholder value is not available, #### characters display for that placeholder in the preview.

SPECIFYING HYPERLINKS OPTIONS

To specify **HyperLinks** options, select **HyperLinks**:



The **Hyperlinks** options

- Check **Include Hyperlinks** to enable hyperlinks in the PDF file.
- To convert lists to hyperlinks, check **Export Lists as Hyperlinks**.
- To change lists to PDF bookmarks, check **Export Lists as Bookmarks**. Clicking a bookmark in the resulting PDF file will take the reader directly to the list item's text in the body of the PDF file.

Choose **Use All Lists** to change all lists in the article to PDF bookmarks. Choose **Use List** to change only one list in the article to PDF bookmarks. Use the drop-down menu to the right of **Use List** to choose which list to change to bookmarks.

- The **Appearance** area specifies how the PDF file's hyperlinks will display on the screen.

Choose **Invisible** or **Visible** from the **Frame** drop-down menu to indicate whether a frame will display around each hyperlink. When you choose **Visible**, the **Width**, **Color**, and **Style** drop-down menus are available.

Use the **Highlight** drop-down menu to specify how the hyperlink will display when clicked in the PDF file. Choose **None** if you do not want to display the hyperlink differently when clicked. Choose **Invert** to display the hyperlink in a different color when it is clicked. The second color is a complementary (opposite) color on the color wheel. Choose **Outline** to display a black outline around the hyperlink text when it is clicked. Choose **Inset** to create a three-dimensional button effect when the hyperlink is clicked.

Choose **Thin**, **Medium**, or **Thick** from the **Width** drop-down menu to specify the width of the frames. Choose a color from the **Color** drop-down menu to specify the color of the frames. Choose **Solid** or **Dashed** from the **Style** drop-down menu to specify whether the frames are solid or dashed lines.

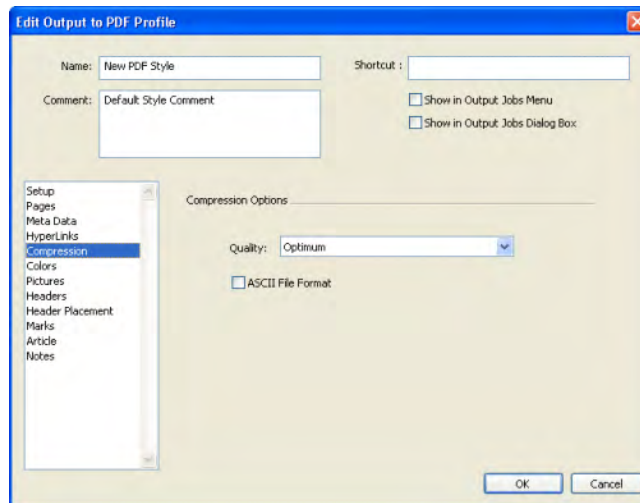
- Use the **Display** drop-down menu to specify how the hyperlink page will display in the PDF file. Choose **Inherit Zoom** to display hyperlink pages at the same magnification as the rest of the PDF file. Choose **Fit Window** to scale hyperlink pages to fit in the document window, while maintaining the width-to-height ratio of the pages. Choose **Fit Width** to fit the horizontal width of hyperlink pages in the document window, while maintaining the width-to-height ratio of the pages. Choose **Fit Length** to fit the vertical height of hyperlink pages in the document window, while maintaining the width-to-height ratio of the pages.



To convert lists to hyperlinks or bookmarks, you must create and build the lists using the QuarkCopyDesk **Lists** feature (**Edit** and **View** menus) before exporting the article as a PDF file.

SPECIFYING COMPRESSION OPTIONS

To specify **Compression** options, select **Compression**:



The **Compression** options

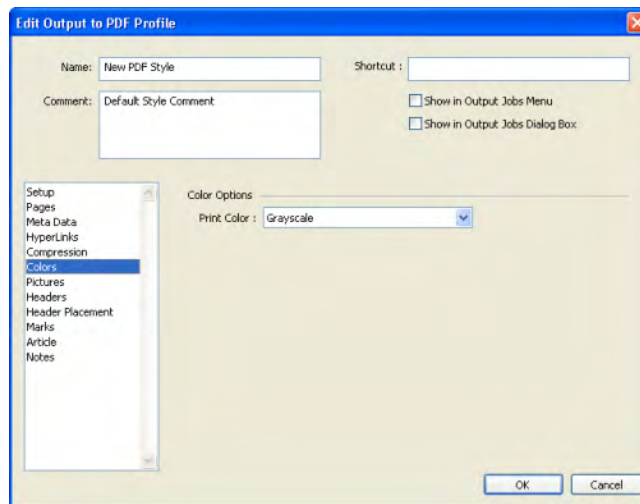
The **Quality** drop-down menu lets you choose from three compression options:

- **Optimum:** Creates a PDF file that is suitable for printing to a personal printer. Files created with this setting may be relatively large, and may take a while to generate.
- **High:** Creates a PDF file that is reasonably small in size and reasonably high in quality. Images are compressed, but should be suitable for on-screen viewing. Files created with this setting should be small enough to send by e-mail.
- **Low:** Creates a PDF file that is quite small in size. Images in PDFs created with this setting should have acceptable quality, but text in raster images may not be readable. This setting lets you generate PDFs more quickly than the other settings.

To export the PDF file as ASCII instead of binary format, check **ASCII File Format**.

SPECIFYING COLORS OPTIONS

To specify color options, select **Colors**:



The **Colors** options

- From the **Print Color** drop-down menu, choose **Grayscale**, **Composite RGB**, or **Composite CMYK**.

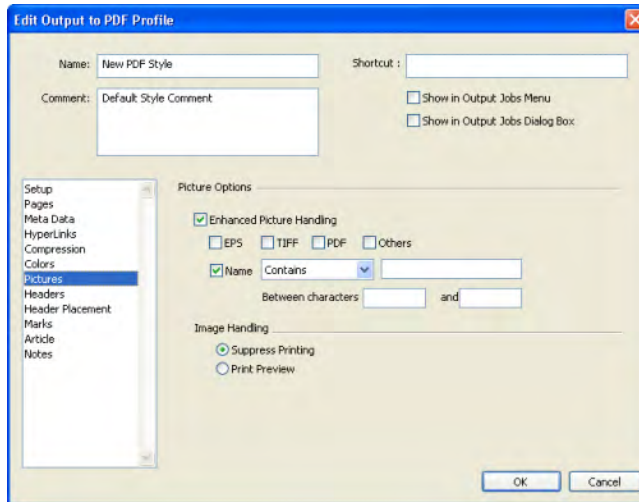
Grayscale substitutes colors as shades of gray. For example, a box with a yellow background will print as a light shade of gray.

Composite RGB uses composite RGB color.

Composite CMYK uses composite CMYK.

SPECIFYING PICTURES OPTIONS

To specify picture options, select **Pictures** in the list and enter relevant information:

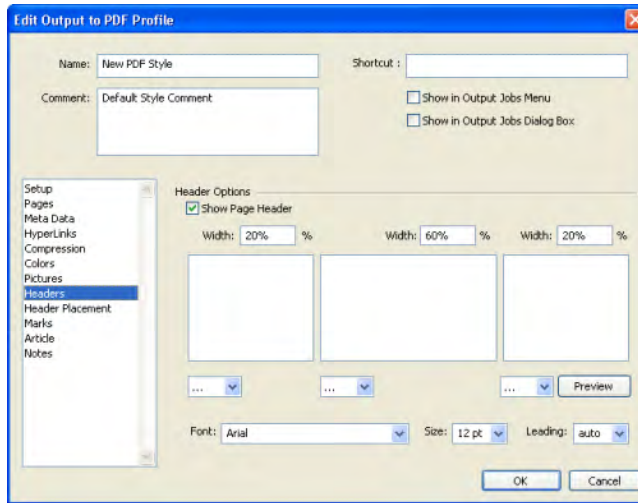


The **Pictures** options

- Check **Enhanced Picture Handling** to apply rules to pictures at output.
- Check **EPS**, **TIFF**, and **PDF** to replace *only* EPS, TIFF, and PDF picture types. Check **Others** to replace any other picture format (except EPS, TIFF, or PDF).
- To search for a picture with a specific name and apply your rules to the picture, check **Name**, choose an option (**Starts with**, **Ends with**, **Contains**, **Does not contain**, **Is equal to**, and **Is not equal to**) from the **Name** drop-down menu, and enter the name you want to search for in the box beside the **Name** drop-down menu. When you choose **Contains** or **Does not contain** from the **Name** drop-down menu, you can enter the name you want to search for and then specify the beginning and ending characters to search between in the **Between Characters** fields.
- To suppress output of the checked picture type(s), click **Suppress Printing**.
- To print the low-resolution preview of the checked picture type, click **Print Preview**. For example, if you check **EPS** and click **Print Preview**, then all EPS pictures will print with their low-resolution preview.

SPECIFYING HEADERS OPTIONS

Select **Headers** in the list to specify information about a header in an article. A header is placed at the top of each QuarkCopyDesk page and can contain both fixed and variable text (through placeholders) such as page number or article name. Output Enhancements XTensions software checks for these variables and prints the relevant information.



The **Headers** options



The information specified in the **Headers** option displays on the PDF output.

- To display a header, check **Show Page Header**, which enables you to specify options in the **Show Page Header** area.
- Enter a percentage of the width for the left, middle, and right areas in the corresponding **Width (%)** fields. Enter text to display in the left, middle, and right fields.

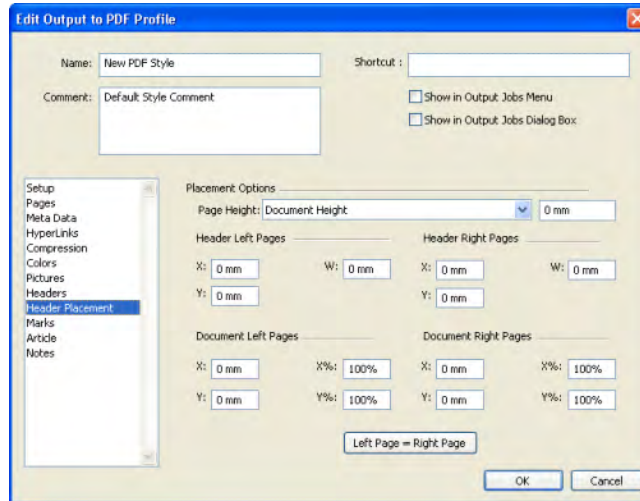


The percentages of width specified for the header refer to the page width of the document or paper on which the article is printed. This percentage can be less than 100%.

- You can also choose relevant placeholder options from the placeholder drop-down menus (< >) (see Chapter 4, “Placeholders” for more information).
- To specify the font type, font size, and leading value, choose the relevant options from the **Font**, **Size**, and **Leading** drop-down menus.
- Click **Preview** to view how the header will print for the open QuarkCopyDesk article. If a placeholder value is not available, ##### characters display for that placeholder in the preview.

SPECIFYING HEADER PLACEMENT OPTIONS

To specify **Header Placement** options, select **Header Placement**:

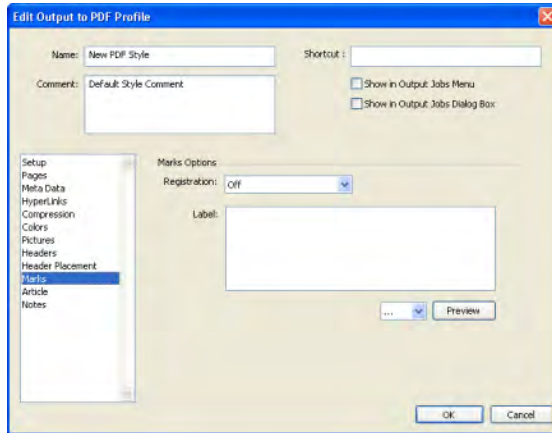


The **Header Placement** options

- Choose an option from the **Page Height** drop-down menu. You can choose **Document Height**, **Document Height + Page Header Height**, or **Document Height + Custom**. When you choose **Document Height + Custom**, you can enter a value in the field beside the **Page Height** drop-down menu. This number is added to the document height to determine the page height.
- The **Header Left Pages** and **Header Right Pages** areas enable you to configure the area where you place the header box and QuarkCopyDesk article. To place a document correctly, you must configure the origin of the document, the scaling of the document, and different settings for left and right pages.
Enter values for the x and y coordinates in the X and Y fields respectively under the **Header Left Pages** and **Header Right Pages** areas. Use the W field to change the total width of the header box.
- Enter values for x and y coordinates in the X and Y fields respectively under the **Document Left Pages** and **Document Right Pages** area to specify the origin where the document content starts. Enter the percentage scaling in the X% and Y% fields to apply scaling to a document to ensure it fits within the output area.
- Click **Left Page = Right Page** to apply the same page header settings to the left and right pages.

SPECIFYING MARKS OPTIONS

To specify **Marks** options, select **Marks**:

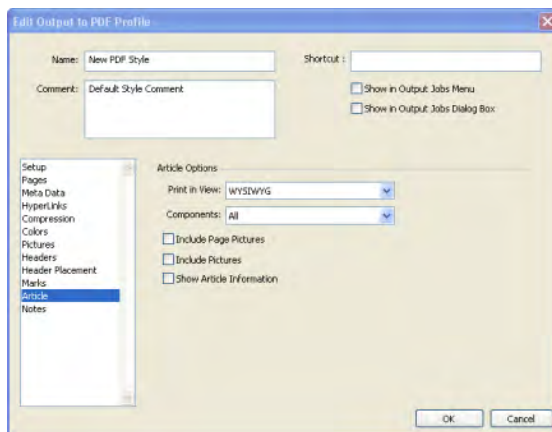


The **Marks** options

- To specify that registration marks print on every page, choose **Centered** or **Off Center** from the **Registration** drop-down menu.
- Enter a label name in the **Label** field. This label name displays between the top registration marks. You can also select a placeholder from the placeholder drop-down menu (< >) to use as a label name (see Chapter 4, “Placeholders” for more information).
- To display a preview of the registration marks, click **Preview**. If a placeholder value is not available, ##### characters display for that placeholder in the preview.

SPECIFYING ARTICLE OPTIONS

To specify **Article** options, select **Article**:

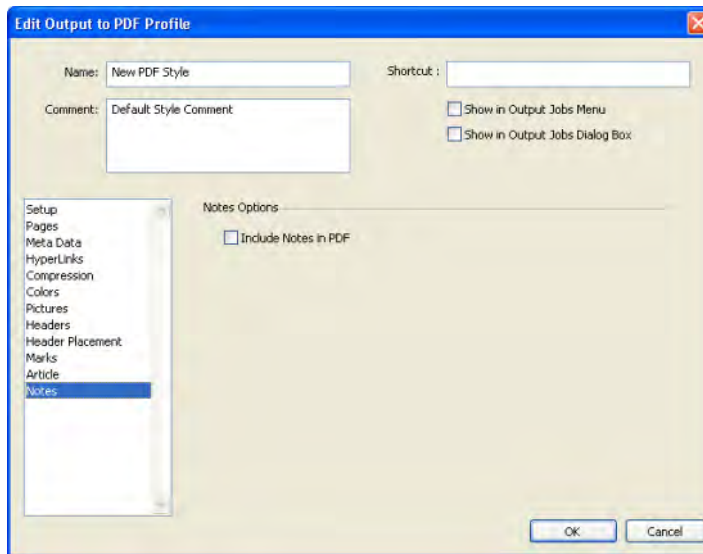


The **Article** options

- Choose a print view from the **Print in View** drop-down menu. You can choose **WYSIWYG**, **Galley**, **Full Screen**, **WYSIWYG One Column**, or **Current Article View**.
- To print only expanded components, choose **Expanded Only** from the **Components** drop-down menu. Choose **Current** to print only the current component. Print **All** components is the default.
- Check **Include Page Pictures** to print locked or uneditable components.
- To print article pictures, check **Include Pictures**.
- Check **Show Article Information** to print date, time, document name, and page number information as a footnote.

SPECIFYING NOTES OPTIONS

To specify **Notes** options, select **Notes**:



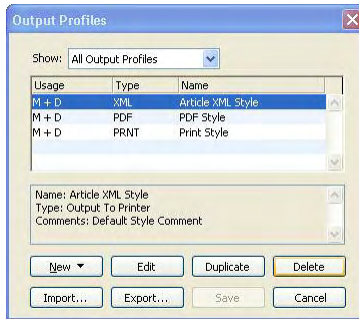
The **Notes** options

- Check **Include Notes in PDF** to add the document notes to the PDF file.

CREATING AN OUTPUT PROFILE FOR AN ARTICLE XML FILE

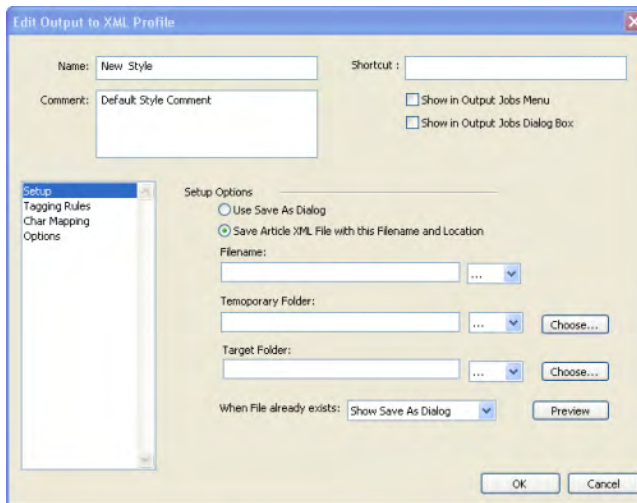
To create an Output Profile for an Article XML file:

- 1 Choose **Edit** → **Output Profiles** to display the **Output Profiles** dialog box.



The **Output Profiles** dialog box

- 2 Choose **New** → **Output to Article XML** to display the **Edit Output to XML Profile** dialog box.



The **Edit Output to XML Profile** dialog box

- 3 Enter a name for the Output Profile in the **Name** field.
- 4 Enter comments, if any, in the **Comments** field.
- 5 Enter a keyboard shortcut in the **Keyboard Shortcut** field.
- 6 Check **Show in Output Profile Jobs Menu** to display an Output Profile in the **File** → **Output Profile Jobs** submenu. Using this, you can directly access an Output Profile from the menu. An **M** displays in the **Usage** column of the **Output Profiles** dialog box when you select this option.

- 7 Check **Show in Output Profiles Jobs Dialog** to display an Output Profile in the **Output Profiles Jobs** dialog box (**File** → **Output Profile Jobs** → **Output Profile Jobs**). A **D** displays in the **Usage** column of the **Output Profiles** dialog box when you select this option.
- 8 Click the following tabs to enter information:
 - **Setup**
 - **Tagging Rules**
 - **Char Mapping**
 - **Options**

For more information on specifying settings in these options, see the relevant section in this guide. For example, to specify file save settings in the **Setup** option, see the “Specifying **Setup** Options” section in this chapter.
- 9 Click **OK** in the **Edit Output to XML Profile** dialog box and then click **Save** in the **Output Profiles** dialog box to save the specified information.
- 10 Click **Cancel** to close the dialog box without saving any information.

SPECIFYING SETUP OPTIONS

To specify **Setup** options, select **Setup**:

- Click **Use Save As Dialog** to display the default **Save As** dialog box when saving to XML output.
- To save the output XML file with a specific name and to a selected location, click **Save Article XML file with this File Name and Location**.

In the **Filename** field, enter the name of the XML file. Enter the temporary folder path for your XML file in the **Temporary Folder** field. Enter the path to the folder where you want to save the final XML file in the **Target Folder** field. Click **Choose** to navigate to and select a temporary folder or target folder path.

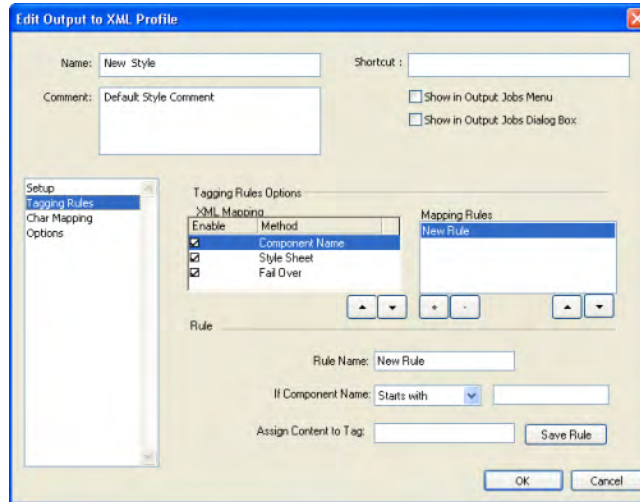
You can also choose relevant placeholders from the placeholders drop-down menus (< >) for the **Filename**, **Temporary Folder**, and **Target Folder** fields.

If an XML file with the same name already exists, then select **Show Save As Dialog** to display the default **Save As** dialog box, **Overwrite** to replace the existing file with the new one, or **Create Version** to create another version of the file.

Click **Preview** to display a preview of the active field. If a placeholder value is not available, ##### characters display for that placeholder in the preview.

SPECIFYING TAGGING RULES OPTIONS

To specify **Tagging Rules** options, select **Tagging Rules**:



The **Tagging Rules** options for the **Component Name** method

- You can set options for XML mapping methods by selecting a method in the **XML Mapping** box. The three methods available are **Component Name**, **Style Sheet**, and **Fail Over**. To enable the **Component Name** or **Style Sheet** methods, check the **Enable** box beside the method. To disable the **Component Name** or **Style Sheet** methods, uncheck the **Enable** box. The **Fail Over** method is always enabled and cannot be disabled.
- Select a method and click the up or down arrow buttons located below the **XML Mapping** box to move the selected method up or down in the list.



The **Fail Over** method always displays at the end of the methods list and is locked in this position.

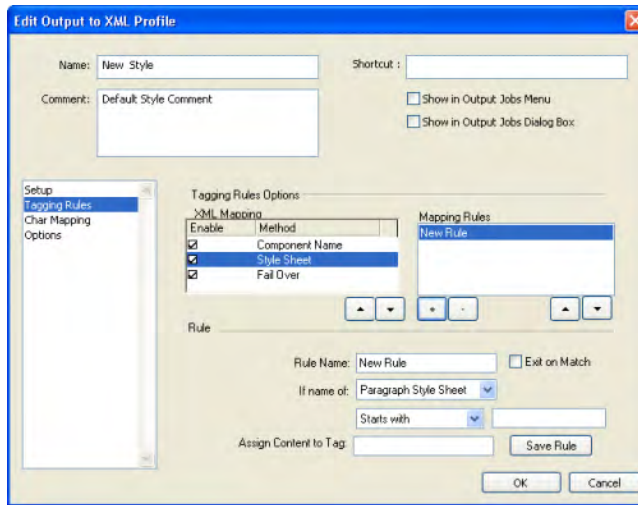
- To display the mapping rules for a method, select the method in the **XML Mapping** box. The rules display in the **Mapping Rules** box.
- Select a mapping rule and click the up or down arrow buttons located below the **Mapping Rules** box to move the selected mapping rule up or down in the list.
- Select a mapping rule and click - to delete the mapping rule.



You cannot delete the **Fail Over** rule.

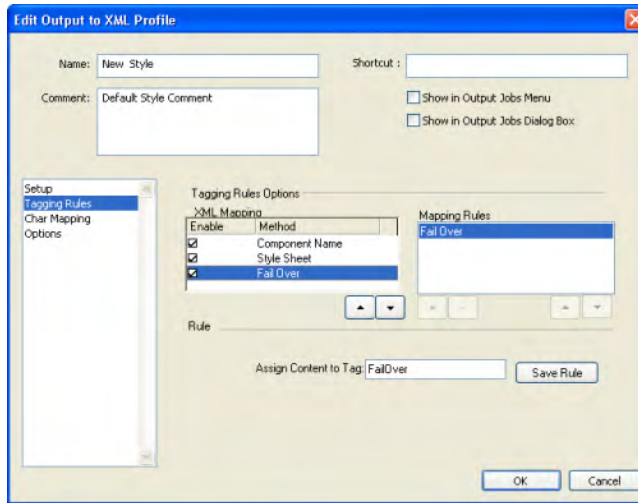
- To create a mapping rule, click +. A default name (**New Rule**) displays in the **XML Mapping** box and in the **Rule Name** field. Use the default rule name or enter a new name for the rule in the **Rule Name** field.

If you are creating a mapping rule for **Component Name**, choose a condition from the **If Component Name** drop-down menu. The available selections are **Starts with**, **Ends with**, **Contains**, **Does not contain**, **Is equal to**, and **Is not equal to**. After you make a selection, enter the text you want to search in the field beside the **If Component Name** drop-down menu. In the **Assign Content to Tag** field, enter an XML tag to assign the component text to. Click **Save Rule** to save the mapping rule.



The **Tagging Rules** options for the **Style Sheet** method

If you are creating a mapping rule for **Style Sheet**, choose **Paragraph Style Sheet** or **Character Style Sheet** from the **If name of** drop-down menu. If you choose **Paragraph Style Sheet**, click **Exit on Match** to stop the system from looking at the contents of a paragraph when a style sheet match is found. Choose a condition from the drop-down menu located beneath the **If name of** drop-down menu. The available selections are **Starts with**, **Ends with**, **Contains**, **Does not contain**, **Is equal to**, and **Is not equal to**. After you make a selection, enter the text you want to search in the field beside the drop-down menu. In the **Assign Content to Tag** field, enter a defined XML tag to assign the component text to. Click **Save Rule** to save the mapping rule.

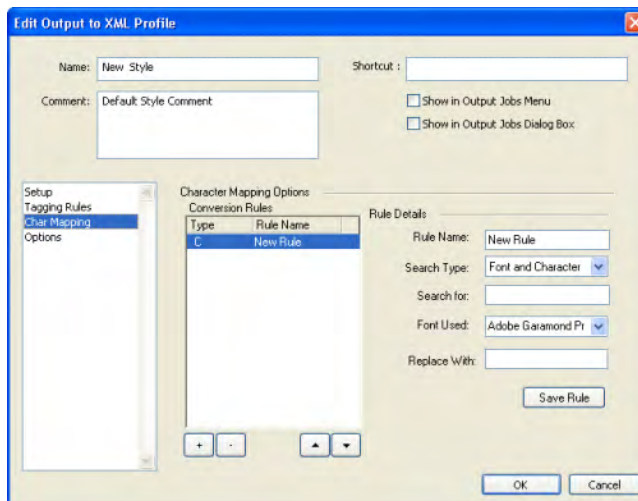


The **Tagging Rules** options for the **Fail Over** method

The **Fail Over** method contains a default **Fail Over** rule. Although you cannot create a rule for the **Fail Over** method, you can enter an XML tag to assign the fail over text to in the **Assign Content to Tag** field. Your entry is applied to the default **Fail Over** rule when you click **Save Rule**.

SPECIFYING CHAR MAPPING OPTIONS

To specify options for character conversion, select **Char Mapping**:



The **Char Mapping** options

Use the **Char Mapping** options to specify rules to convert characters.

- Rules defining character mappings display in the **Conversion Rules** box. Rules are listed by **Type** and **Rule Name**. The **Type** column refers to the settings in the **Search Type** field.
- Select a rule and click the up or down arrow to move the rule up or down in the list.
- You can delete a rule by selecting it in the **Conversion Rules** box and clicking -.
- To create a conversion rule, click +. A rule with a default name (**New Rule**) and a default type (**C**) displays in the **Conversion Rules** box. The default name also displays in the **Rule Name** field.

Choose **Character**, **Font**, or **Font and Character** from the **Search Type** drop-down menu.

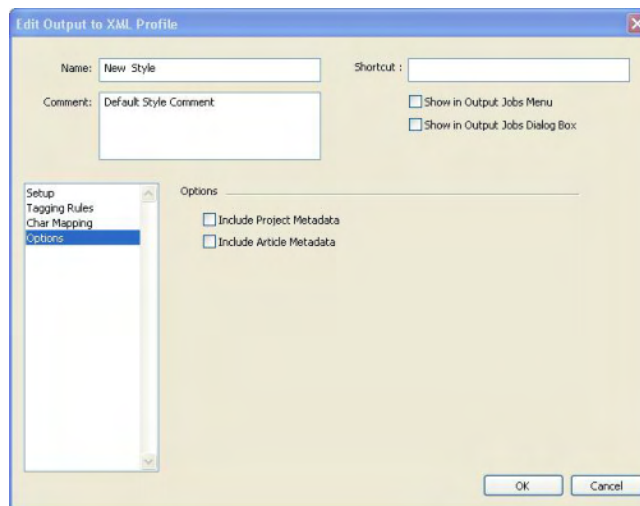
Enter the text you want to find in the **Search for** field. If you selected **Font and Character** in the **Search Type** field, choose the font you want to search for from the **Font Used** drop-down menu.

Enter the replacement text in the **Replace With** field.

Click **Save Rule** to save your settings.

SPECIFYING OPTIONS

To include metadata options in the XML output, select **Options**:



The **Options** for XML Profile

- Check **Include Project Metadata** to add the metadata of the project to the XML file.
- Check **Include Article Metadata** to add the metadata of the article to the XML file.

EDITING, DUPLICATING, DELETING, IMPORTING, AND EXPORTING AN OUTPUT PROFILE

EDITING AN OUTPUT PROFILE

To edit an Output Profile:

- 1 Choose **Edit → Output Profiles** to display the **Output Profiles** dialog box.
- 2 Select an Output Profile from the **Output Profiles** list and click **Edit** to display the **Edit Output to <output profile type> Profile** dialog box. Make required changes to the relevant options.
- 3 Click **OK** in the **Edit Output to <output profile type> Profile** dialog box, and click **Save** in the **Output Profiles** dialog box to save the specified information.

DUPLICATING AN OUTPUT PROFILE

To duplicate an Output Profile:

- 1 Choose **Edit → Output Profiles** to display the **Output Profiles** dialog box.
- 2 Select an Output Profile from the **Output Profiles** area and click **Duplicate** to display the **Edit Output to <output profile type> Profile** dialog box.
- 3 Click **OK** in the **Edit Output to <output profile type> Profile** dialog box, and click **Save** in the **Output Profiles** dialog box to save the specified information.

DELETING AN OUTPUT PROFILE

To delete an Output Profile:

- 1 Choose **Edit → Output Profiles** to display the **Output Profiles** dialog box.
- 2 Select an Output Profile from the **Output Profiles** list and click **Delete**.
- 3 Click **Save** to delete the Output Profile. If you close the **Output Profiles** dialog box before you click **Save**, the Output Profile is not deleted.

EXPORTING AN OUTPUT PROFILE

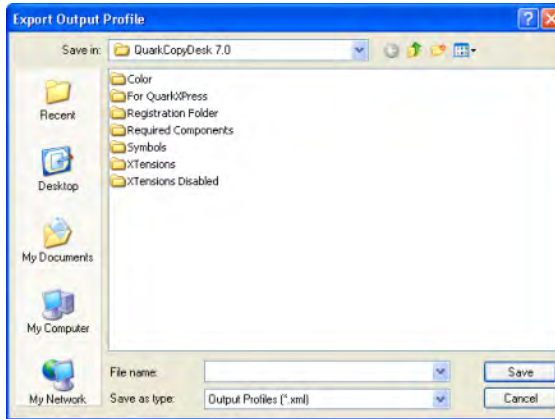
To export an Output Profile:



After exporting an Output Profile in one operating system (Mac OS or Windows), you can import and export the same Output Profile across platforms.

- 1 Choose **Edit → Output Profiles** to display the **Output Profiles** dialog box.
- 2 Select an Output Profile from the **Output Profiles** list.

- 3 Click **Export** to display the **Export Output Profile** dialog box.



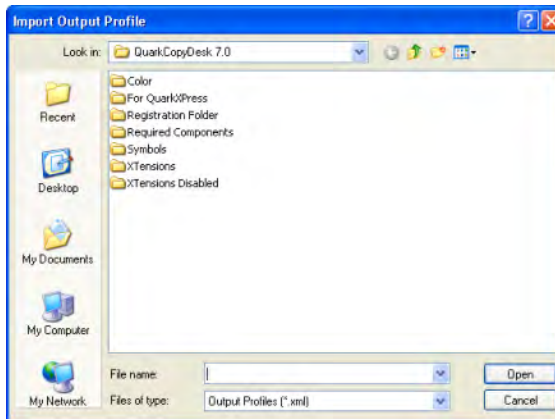
The **Export Output Profile** dialog box

- 4 Choose a location to export the file from the **Where/Save in** drop-down menu.
- 5 After entering a file name in the **Save As/File name**, click **Save**.

IMPORTING AN OUTPUT PROFILE

To import an Output Profile:

- 1 Choose **Edit** → **Output Profiles** to display the **Output Profiles** dialog box.
- 2 Click **Import** to display the **Import Output Profile** dialog box.



The **Import Output Profile** dialog box

- 3 Select an Output Profile to import and click **Open**.

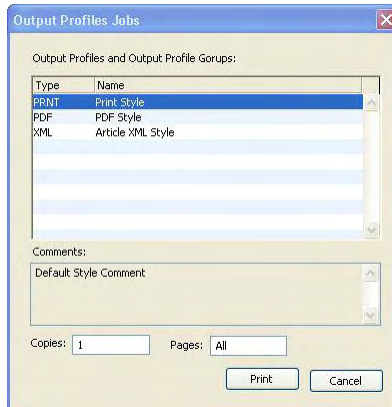
EXECUTING AN OUTPUT PROFILE

To start an Output Profile:

- 1 Choose **File** → **Output Profile Jobs** → **Output Profile Jobs** to display the **Output Profiles Jobs** dialog box.



You can also choose an Output Profile directly from the **File** menu (**File** → **Output Profiles Jobs** → <output profile name>).



The **Output Profiles Jobs** dialog box

- 2 Select an Output Profile from the list You can also choose multiple Output Profiles to process.
- 3 Enter the number of copies to output in the **Copies** field.
- 4 To specify the pages you want to print, enter a value in the **Pages** field (the default is **All**). In the **Pages** field, you can specify ranges of pages, nonsequential pages, or a combination of ranges and nonsequential pages for printing.



If you chose the <Inherit> placeholder for the **Copies** or **Pages** field for an individual Output Profile, the values you enter in the **Output Profiles Jobs** dialog box are used as values in the **Copies** or **Pages** fields in the individual Output Profiles.

- 5 Click **Print** to start processing the selected Output Profile.

Chapter 3: Output Profile Groups

Output Profile Groups are a collection of Output Profiles that you can execute at the same time by simply selecting a single Output Profile Group.

You can create, edit, delete, duplicate, import, and export as many Output Profile Groups as required.

CREATING AN OUTPUT PROFILE GROUP

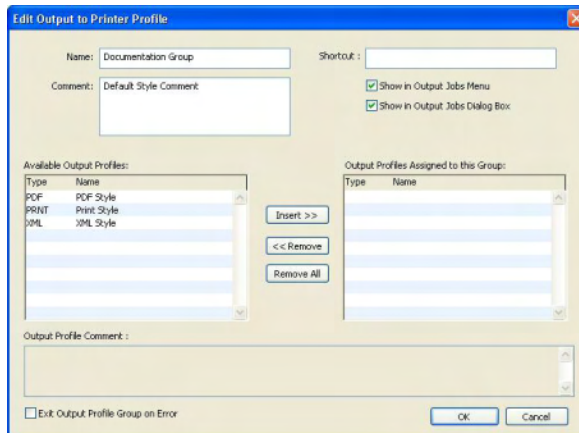
To create an Output Profile Group:

- 1 Choose **Edit → Output Profile Groups** to display the **Output Profile Groups** dialog box.



The **Output Profile Groups** dialog box

- 2 Click **New** to display the **Edit Output Profile Group** dialog box.



The **Edit Output Profile Group** dialog box

- 3 Enter a unique name for the Output Profile Group in the **Name** field.
- 4 Enter comments in the **Comments** field.
- 5 Check **Show in Menu** to display an Output Profile Group in the submenu **File → Output Profile Jobs → <output profile groups>**. You can then access an Output Profile Group from the **File** menu, or enter a keyboard shortcut in the **Keyboard Shortcut** field.
- 6 Check **Show in Dialog** to display the Output Profile Group in the **Output Profiles Jobs (File → Output Profile Jobs → Output Profiles Jobs)** dialog box.
- 7 The **Available Output Profiles** pane displays a list of all available Output Profiles. Click **Insert** to add the selected Output Profile to the **Output Profiles Assigned to this Group** pane. All Output Profiles assigned to this list form a part of the Output Profile Group. Click **Remove** to delete the selected Output Profile from **Output Profiles Assigned to this Group** pane. Click **Remove All** to delete all Output Profiles from the **Output Profiles Assigned to this Group** pane.
- 8 Click an Output Profile in the **Available Output Profiles** pane and view the relevant information in the **Output Profile Comment** field.
- 9 Check **Exit Output Profile Group on Error** to stop processing the next available Output Profile when error(s) occurs. Unchecking this starts processing the next available Output Profile in the group.
- 10 Click **OK** in the **Edit Output Profile Group** dialog box and then click **Save** in the **Output Profile Groups** dialog box to save the specified information.

EDITING, DUPLICATING, DELETING, EXPORTING AND IMPORTING AN OUTPUT PROFILE GROUP

EDITING AN OUTPUT PROFILE GROUP

To edit an Output Profile Group:

- 1 Choose **Edit → Output Profile Groups** to display the **Output Profile Groups** dialog box.
- 2 Select an Output Profile Group from the **Output Profile Groups** pane and click **Edit** to display the **Edit Output Profile Group** dialog box. Make required changes in this dialog box.
- 3 Click **OK** in the **Edit Output Profile Group** dialog box, then click **Save** in the **Output Profile Groups** dialog box to save the specified information.

DUPLICATING AN OUTPUT PROFILE GROUP

To duplicate an Output Profile Group:

- 1 Choose **Edit → Output Profile Groups** to display the **Output Profile Groups** dialog box.
- 2 Select an Output Profile Group from the **Output Profile Groups** pane and click **Duplicate** to display the **Edit Output Profile Group** dialog box.
- 3 Click **OK** in the **Edit Output Profile Group** dialog box and then click **Save** in the **Output Profile Groups** dialog box to create a copy of the selected Output Profile Group.

DELETING AN OUTPUT PROFILE GROUP

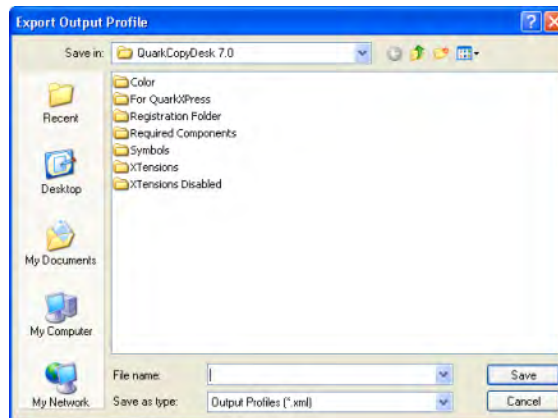
To delete an Output Profile Group:

- 1 Choose **Edit → Output Profiles Group** to display the **Manage Output Profile Groups** dialog box.
- 2 Select an Output Profile Group from the **Output Profile Groups** list and click **Delete** to delete the Output Profile Group.

EXPORTING AN OUTPUT PROFILE GROUP

You can export an Output Profile Group to a file. To export an Output Profile Group:

- 1 Choose **Edit → Output Profile Groups** to display the **Output Profile Groups** dialog box.
- 2 Select an Output Profile from the **Output Profile Groups** pane.
- 3 Click **Export** to display the **Export Output Profile Group** dialog box.



The **Export Output Profile Group** dialog box

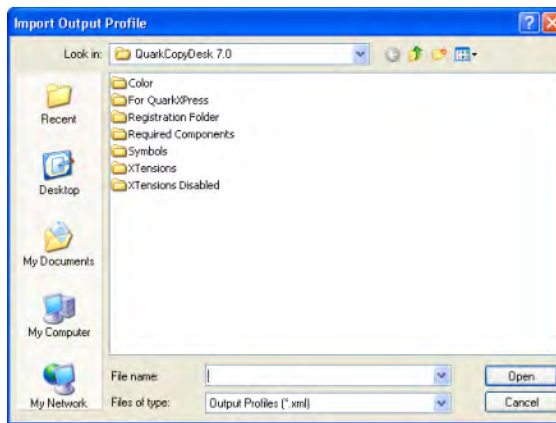
- 4 Choose the location where you want to export the file in the **Where/Save** drop-down menu.
- 5 After entering a file name in the **Save As/File name** field, click **Save**.

➔ When you export an Output Profile Group, the Output Profiles associated with the group do not export. To export Output Profiles in a group, export each Output Profile individually.

IMPORTING AN OUTPUT PROFILE GROUP

You can import an Output Profile Group that was exported as an XML file. To import an Output Profile Group:

- 1 Choose **Edit → Output Profile Groups** to display the **Output Profile Groups** dialog box.
- 2 Click **Import** to display the **Import Output Profile Group** dialog box.



The **Import Output Profile Group** dialog box

- 3 Select an Output Profile Group and click **Open**.

➔ You can only import an Output Profile Group that was exported as an XML file.

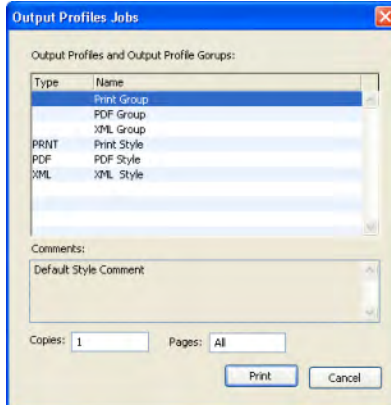
EXECUTING AN OUTPUT PROFILE GROUP

To execute an Output Profile Group:

- 1 Choose **File** → **Output Profile Jobs** → **Output Profile Jobs** to display the **Output Profiles Jobs** dialog box.



You can also choose an Output Profile Group directly from the **File** menu (**File** → **Output Profile Jobs** → <output profile group name>).



The **Output Profiles Jobs** dialog box

- 2 Select an Output Profile Group from the list. You can also choose multiple Output Profile Groups to process.
- 3 Enter the number of copies to output in the **Copies** field.
- 4 To specify the pages to print, enter a value in the **Pages** field (the default is **All**). In the **Pages** field, you can specify ranges of pages, nonsequential pages, or a combination of ranges and nonsequential pages for printing.

Chapter 4: Placeholders

Placeholders are variables that are replaced with their proper values when an Output Profile is processed. You can use placeholders to inform a user about some important point or to dynamically configure file paths and file names. You can also use these placeholders in header and info boxes.

PLACEHOLDERS SYNTAX

Placeholders are plain text. You can create a placeholder by simply entering text in a text field using placeholder syntax. Placeholders have their own syntax to help a system recognize that the entered text is a placeholder. Placeholder syntax is enhanced to perform basic string operations and formatting.

BASIC SYNTAX

The basic syntax for a placeholder is <placeholder>. Use “<” to start a placeholder and “>” to end a placeholder. To use “<” and “>” characters as part of the placeholder text, enter “<<” and “>>” respectively in the field.

For example, <IPAddress> returns the IP address of a computer such as 192.168.99.200.



Placeholder names are not case sensitive.

GETTING SUBSTRING OF A PLACEHOLDER VALUE

SYNTAX 1: GETTING THE FIRST N AND LAST N CHARACTERS OF A RETURNED VALUE

Use the syntax <placeholdername, numberOfChar> to get the first n and last n characters of a returned value. To enter this syntax properly, make sure you understand the following points:

- The delimiter used is a comma (,).
- White spaces are allowed after delimiter.
- The number of characters is added as a parameter.
- A positive number returns the number of characters from the beginning of a returned value.
- A negative number returns the number of characters from the end of a returned value.

- A returned value will be treated the same, whether a string or a number.
- If a value is shorter than the request, the available value is returned.

SYNTAX 2: GETTING A SUBSTRING OF “NUMBEROFCHAR” CHARACTERS STARTING FROM POSITION “START”

Use the syntax <placeholdername, start, numberOfChar> to get a substring of “numberOfChar” characters starting from the position “start.” To enter this syntax properly, make sure you understand the following points:

- The delimiter used is a comma (,).
- White spaces are allowed after delimiter.
- The start position is added as a parameter.
- The number of characters to extract is added as parameter.
- The first character in a returned value is in the first position number.
- A positive number points to the position in the returned value and returns the specified number of characters from this position onward.
- A negative number returns the number of characters from the end of a returned value.
- A negative number moves the start position counted from the end and returns the number of characters from this point towards the beginning of the returned value.
- If a value is shorter than the request, the available value is returned.
- If the start position is larger than the available characters, an empty string is returned.

For example, if the input for this example is the IPAddress (192.168.99.200) of a computer, then <IPAddress> returns “192.168.99.200”; <IPAddress, 3> returns “192”; <IPAddress, -3> returns “200”; <IPAddress, 3, 2> returns “2.”; and <IPAddress, -5, 3> returns “.99”.

SYNTAX 3: GETTING NTH WORD

Use the syntax <placeholdername, nthWord> to get an nth word. To enter this syntax properly, make sure you understand the following points:

- The delimiter used is a comma (“,”).
- White spaces (“ ”) are allowed after the delimiter.
- The nth word added as parameter is a number and a “w.”
- A positive number returns the nth word of a returned value.
- A negative number returns the nth word starting from the end of the returned value.
- Characters like white spaces, dot (.), and comma (,) are used for separating words.
- If the nth word is not available in a value, an empty string is returned.

For example, if the input for this example is an IP address (192.168.99.200) of a computer, then `<IPAddress>` returns "192.168.99.200"; `<IPAddress, 1w>` returns "192"; `<IPAddress, -1w>` returns "200."

FORMATTING THE OUTPUT

SYNTAX 1: PROVIDING SIMPLE OUTPUT PATTERN

Basic syntax for specifying an output pattern is `<placeholdername, numberOfChar !>`. To enter this syntax correctly, ensure you understand the following points:

- Use the "!" character to format the output.
- You can add the "!" character to any version of extracting a substring.
- The "!" character causes the width of the resulting substring to be as wide as the requested number of characters. Numbers are right aligned and text is left aligned.

For example, if the current page number is "5", then `<CurrentPageNumber>` returns "5" and `<CurrentPageNumber, 3!>` returns "5" because "3!" here specifies that three character spaces should be used for displaying the current page number.

SYNTAX 2: FORMATTING OUTPUT WITH LEADING OR TRAILING CHARACTERS

The syntax for formatting an output with leading or trailing characters is `<placeholdername, numberOfChar !Char>`. To enter this syntax correctly, ensure you understand the following points:

- Use the "!" character to format the output.
- You can add the "!" character to any version of extracting a substring.
- The "!" character causes the width of the resulting substring to be as wide as the requested number of characters. Numbers are right aligned and text is left aligned.
- A character immediately after "!" is used as the character that fills the leading or trailing space.

For example, `<CurrentPageNumber, 3!>` returns " 5"; `<CurrentPageNumber, 3!0>` returns "005"; `<DocumentName, 31>` returns "This is a test document"; `<DocumentName, 31!>` returns "This is a test document"; `<DocumentName, 31!_>` returns "This is a test document_____".

In this example, "3!0" specifies that the output should have three character spaces and it should include "0" in the output in place of blank spaces.

LIST OF PLACEHOLDERS

You can divide placeholders into three categories: system, action, and document (general document information). Each category contains a list of placeholders required for performing related tasks.

Following are the system placeholders:

SYSTEM PLACEHOLDERS	DESCRIPTION
Startup Disk	Boot drive of the computer.
User Name	System user log-on.
IP Address	IP address of the computer.
Machine Name	Name of the computer.
Current Date	Current date displayed in the Date/Time Properties dialog box.
Current Time	Current time displayed in the Date/Time Properties dialog box.

Following are the action placeholders:

ACTION PLACEHOLDERS	DESCRIPTION
Ask	An alert displays with the given text as a parameter. For example, <ASK, "Enter Version Number Please">.
Notify	An alert displays for notification. For example, <Notify, "Output Job Done">.
Inherit	If you choose Inherit in the Copies or Pages field for an Output Profile, then process an output from the Output Profiles Jobs dialog box (File → Output Profile Jobs) the values in the Copies and Pages fields of Output Profiles Jobs dialog box are used. If you process an Output Profile from the File → Output Profile Jobs → <output profile name> menu, the default values of 1 for Copies and All for Pages are used.

Following are the document placeholders:

DOCUMENT PLACEHOLDERS	DESCRIPTION
Document Name	Name of the document being printed.
Document File Path	File path of the document being printed.
Creation Date	Creation date of the document being printed.
Creation Time	Creation time of the document being printed.
Current Plate Number	Number of the current plate that is being printed (if the printing is done with separations).
Current Plate Name	Name of the current plate that is being printed (if the printing is done with separations).
Modification Date	Last modification date of the document being printed.
Modification Time	Last modification time of the document being printed.
Document Size	Size of the document being printed.
Number of Document Pages	Total number of pages of the document being printed.
Number of Document Spreads	Total number of spreads of the document being printed.
Color Space	Models are color spaces for images in an editorial workflow; a color space of an article can be CMYK, black and white, spot color, and CMYK and spot color.
First Output Page	Sequence number of the first page of the document being printed.
Last Output Page	Sequence number of the last page of a page range. For example, if an article has 10 pages and the page range to print is 3 to 7, then the last output page is 5, which is the fifth page in the sequence 3 to 7, or page number 7.
First Output Spread	Sequence number of the first spread of the document being printed (returns “1” in all cases).

DOCUMENT PLACEHOLDERS	DESCRIPTION
Last Output Spread	Sequence number of the last spread according to the page range. For example, if an article has 12 facing pages, it gives six spreads. The page range for output is 3 to 8, so “last output spread” is 3.
Current Output Page	Sequence number of the currently printing page according to the page range.
Current Output Spread	Sequence number of the currently printing spread according to the page range.
First Folio of Current Output Spread	Page number of the first page of the current spread.
Last Folio of Current Output Spread	Page number of the last page of the current spread.
Output Style Name	Output Style selected for the document currently being printed.
Printer Name	Name of the printer the print style is going to print.
Number of Plates	Total number of CMYK and spot color plates.
Number of 4c plate	Number of CMYK plates used in the current document.
Number of Spot Color Plates	Number of spot color plates.
Folio	Page number of the page being printed.
Folio Prefix	Prefix of the page as formatted by the user in the Prefix field of the Section dialog box.
List of Plates	List of all CMYK and spot color plates in the document.
List of 4c Plates	List of used CMYK plates in the document.
List of Spot Color Plates	List of spot color plates in the document.

Glossary

OUTPUT PROFILES

Output Profiles are an enhanced version of output styles that you can apply to documents and use to output a QuarkCopyDesk article to a printer, a PDF file, or an XML file.

OUTPUT PROFILE GROUPS

Output Profile Groups are a collection of Output Profiles that you can execute at the same time by simply selecting a single Output Profile Group.

HEADER BOX

A box that is placed at the top of each page and displays information coming from placeholders. This box only displays on the printout.

PLACEHOLDERS

Placeholders are variables that are replaced with their proper value when an Output Profile is processed. They are used to configure file names and file paths or are used in a header or info box.